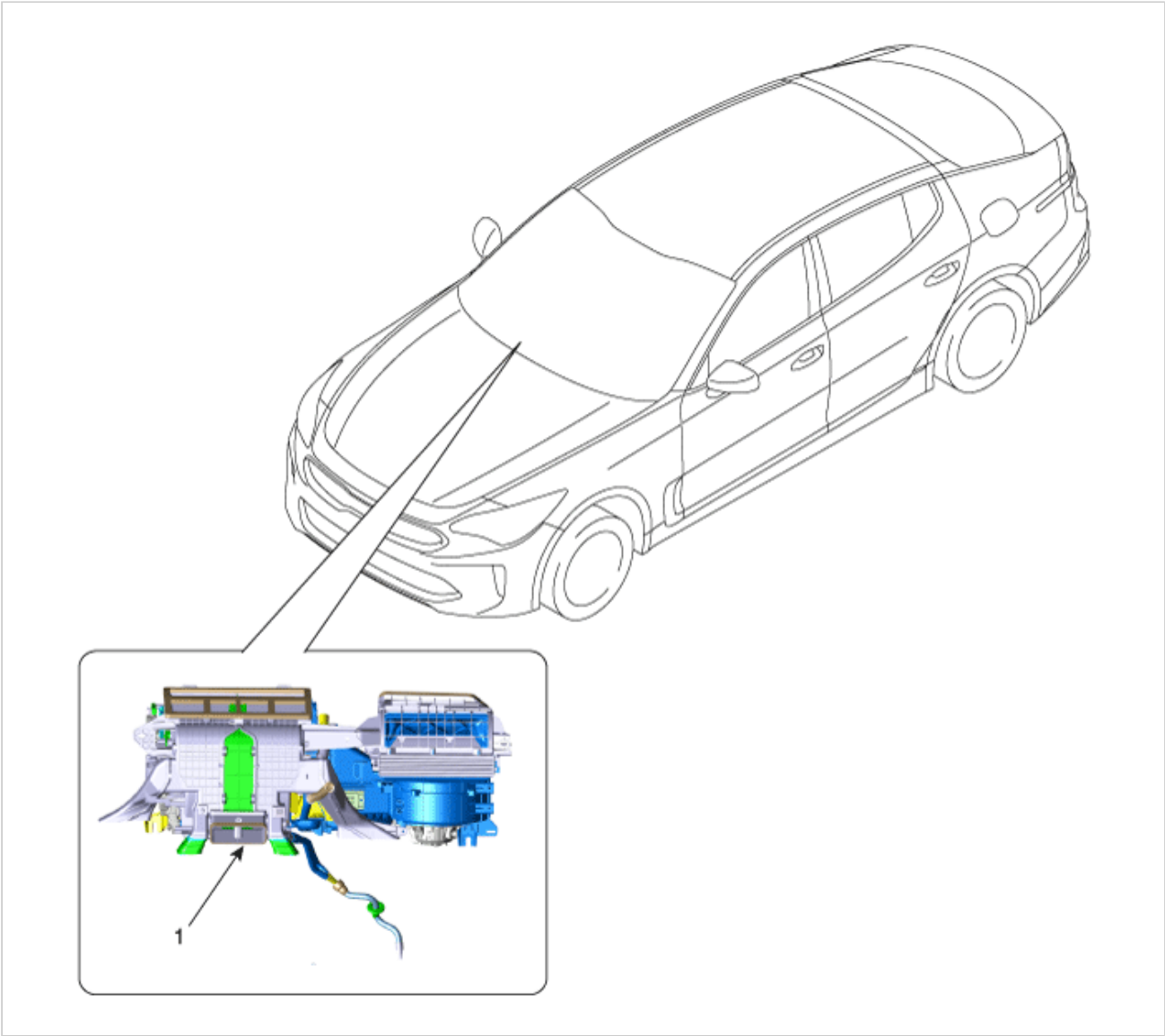


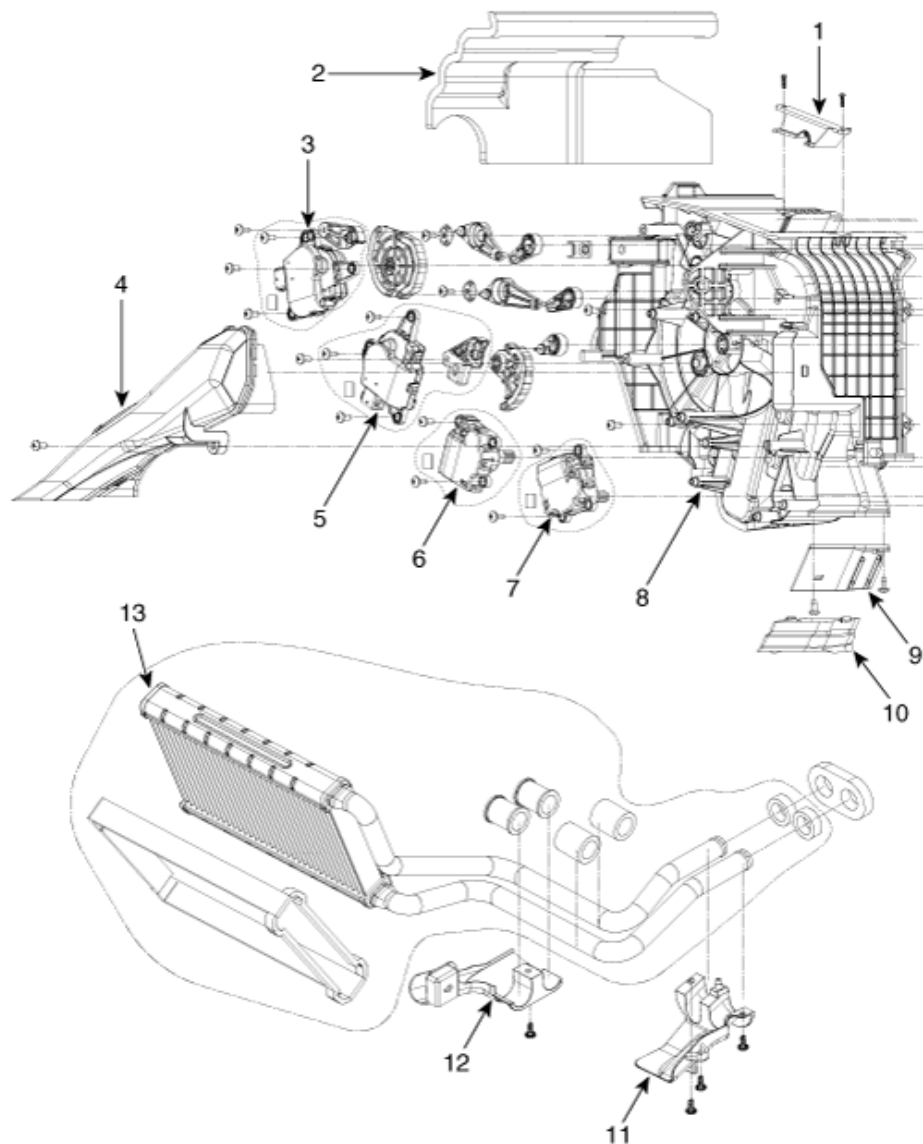
Component Location



1. Heater Unit

Components

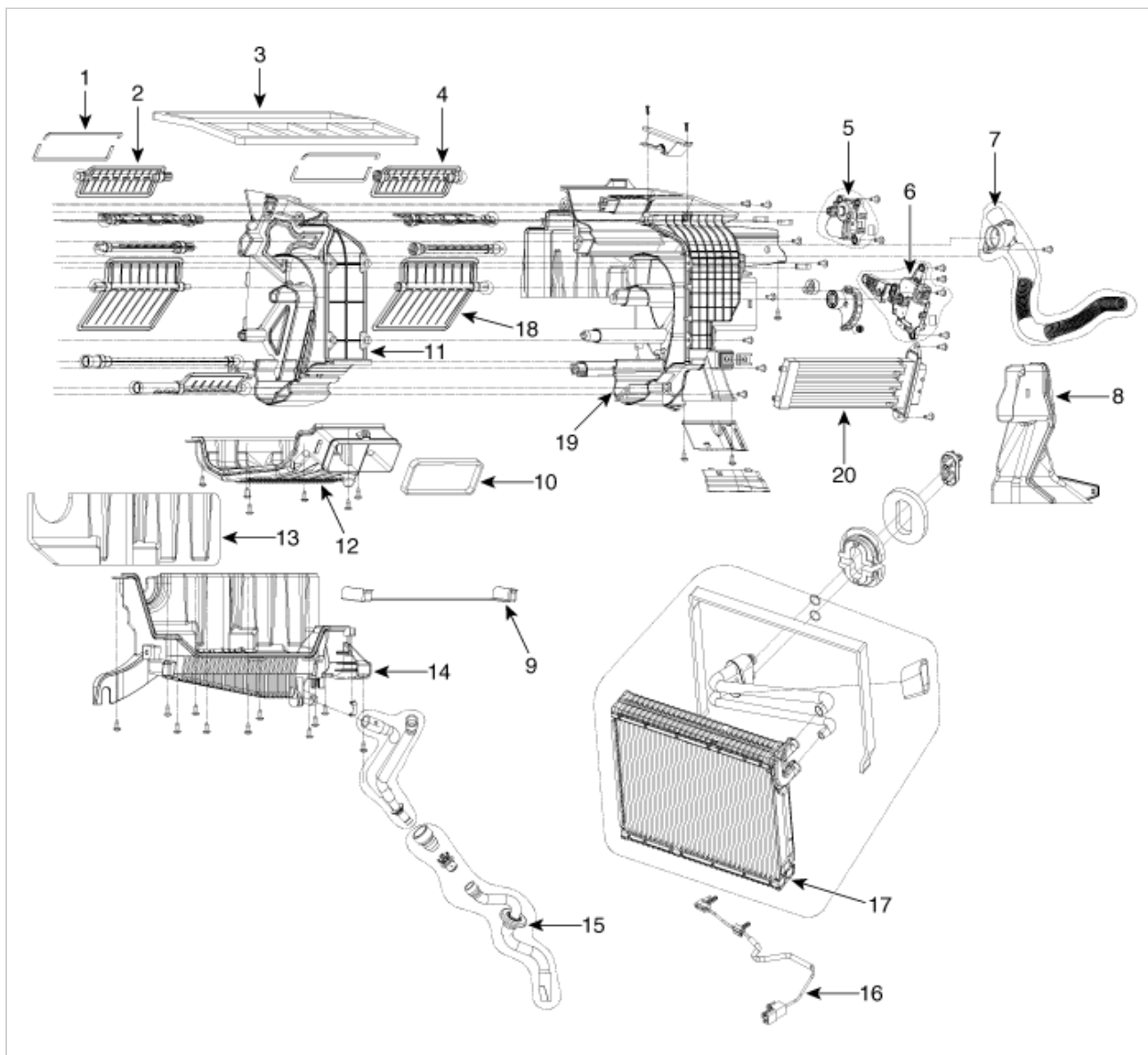
[LH]



1. Air guard
2. Anti noise pad
3. Mode control actuator
4. Shower duct [LH]
5. Temperature control actuator
6. Console ON/OFF actuator
7. Console temperature control actuator

8. Heater case [LH]
9. Rear heater duct
10. Rear heater duct
11. Heater core cover
12. Heater core cover
13. Heater core assembly

[RH]



- | | |
|---------------------------------|-----------------------------------|
| 1. Deffog seal | 11. Heater seperator |
| 2. Auto defogging door [LH] | 12. Console cover |
| 3. Seal | 13. Anti noise pad |
| 4. Auto defogging door [RH] | 14. Heater case [Lower] |
| 5. Auto defogging actuator | 15. Drain hose |
| 6. Temperature control actuator | 16. Evaporator temperature sensor |
| 7. Aspirator hose assembly | 17. Evaporator core |
| 8. Shower duct [RH] | 18. Temperature control door |
| 9. Evaporator insulation [Low] | 19. Heater case [RH] |
| 10. Console seal | 20. PTC Heater |