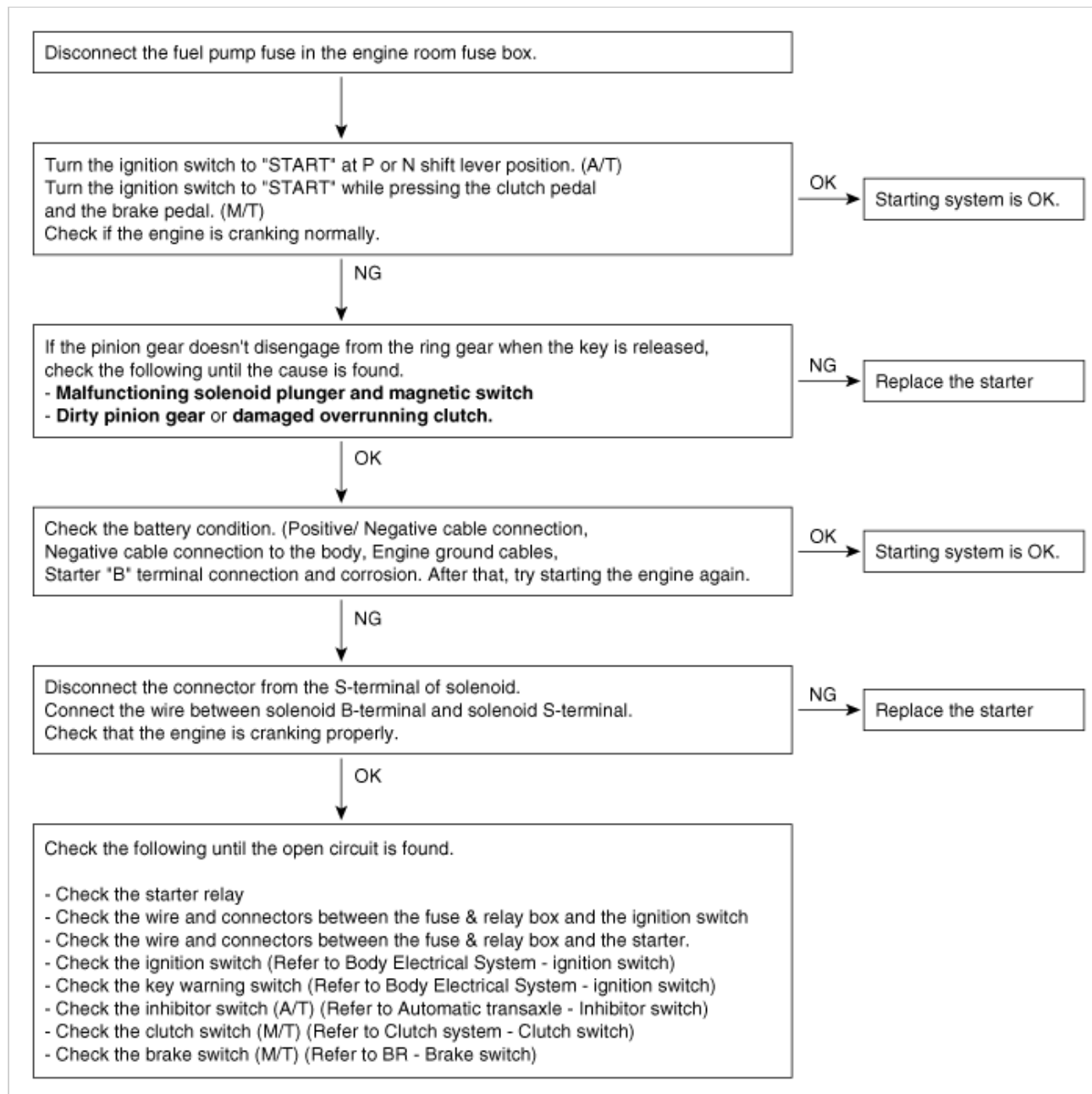




Troubleshooting

NOTICE

- The battery must be in good condition and fully charged for this troubleshooting.



Trouble symptom	Probable cause	Remedy
Engine will not crank	Battery charge low	Charge or replace battery
	Battery cables loose, corroded or worn out	Repair or replace cables
	Transaxle range switch (Vehicle with automatic transaxle only)	Refer to AT group-automatic transaxle
	Fuse blown	Replace fuse
	Starter motor faulty	Replace
	Ignition switch faulty	Replace
Engine cranks slowly	Battery charge low	Charge or replace battery
	Battery cables loose, corroded or worn out	Repair or replace cables

	Starter motor faulty	Replace
Starter keeps running	Starter motor faulty	Replace
	Ignition switch	Replace
Starter spins but engine will not crank	Short in wiring	Repair or replace wiring
	Pinion gear teeth broken or starter motor	Replace
	Ring gear teeth broken	Replace fly wheel or torque converter